

#### SPECIFICATIONS

##### COIL DATA

RATED COIL VOLTAGE 24 VOLTS 50/60 Hz  
 NOMINAL COIL CURRENT 50 ma  
 PICK UP VOLTAGE 19.2 VOLTS MAX  
 DROP OUT VOLTAGE 7.2 VOLTS MIN  
 NOMINAL OPERATING POWER 1.20 VA

#### CONTACTS

CONTACT MATERIAL GOLD-CLAD  
 SILVER NICKEL  
 CONTACTS (4 FORM C) 4 PDT  
 RATING (RESISTIVE) 5A 250V AC  
 BREAKDOWN VOLTAGE  
 BETWEEN CONTACT SETS 700V RMS  
 BETWEEN CONTACTS AND COIL 1500V RMS  
 BETWEEN LIVE PARTS AND GROUND 1500V RMS

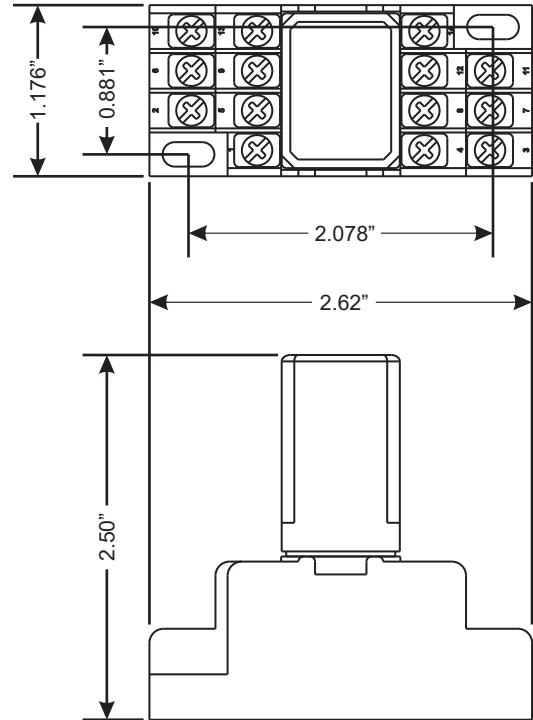
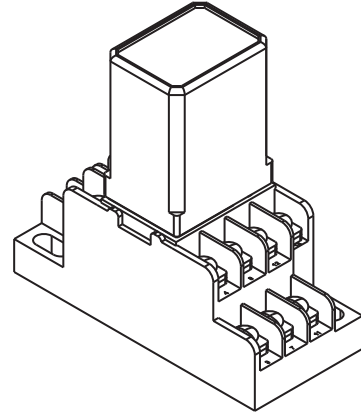
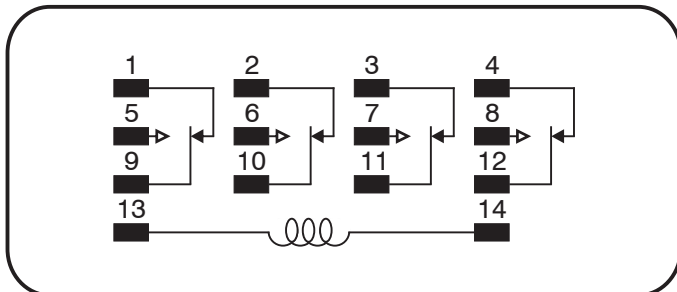
#### AMBIENT TEMPERATURE

-58°F TO +122°F

#### EXPECTED LIFE (MIN OPERATIONS)

AT 1A RMS 2,000,000

#### SCHEMATIC



Excellence Without Compromise



385 Hwy. 33  
 Englishtown, NJ 07726  
 Ph: 800-446-3110  
 Fx: 732-446-5362

#### SUBMITTAL FORM

SUBMITTED BY: \_\_\_\_\_  
 JOB: \_\_\_\_\_  
 ARCHITECT: \_\_\_\_\_  
 ENGINEER: \_\_\_\_\_  
 CONTRACTOR: \_\_\_\_\_  
 LOCATION: \_\_\_\_\_