

ULTRA-ZONE[®]

Forced Air Zone Controls

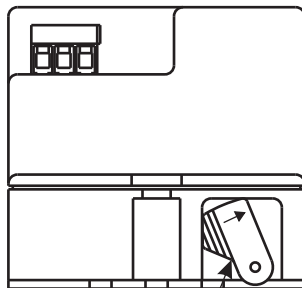
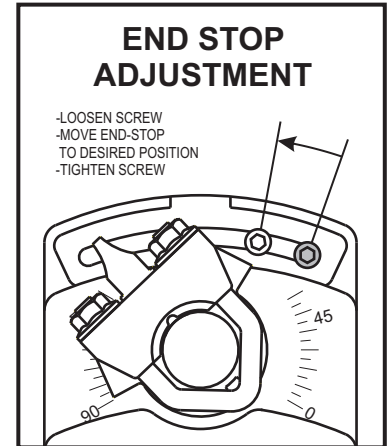
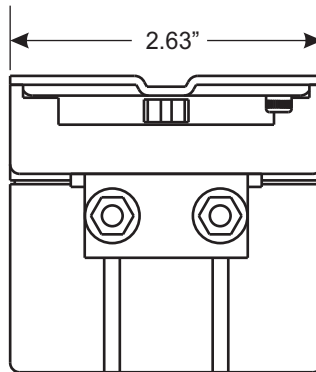
SUBMITTAL SHEET

Model MA-AC1 Motor Actuator

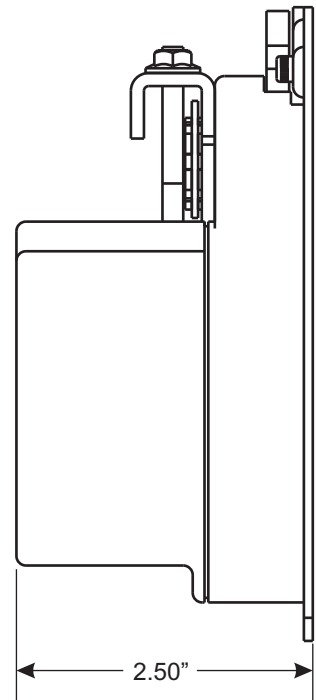
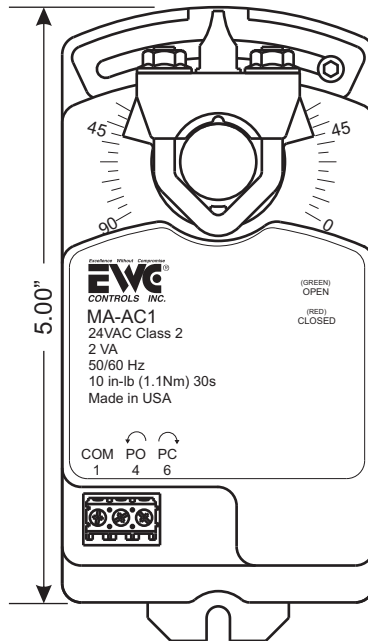
The MA-AC1 motor actuators are easy to install, easy to wire up, and come with a 5 year warranty. The superior design insures long life and no maintenance. The MA-AC1 is a 24vac 3 wire power open / power close motor actuator rated at 10" lbs. of torque. The MA-AC1 motor actuator features bright Green and Red LED's which correspond to the OPEN and CLOSED position of the damper blades. The MA-AC1 also includes an End-Stop for Minimum or Maximum position capability to allow for adjustment of the design CFM flow into a particular zone or to allow for controlled leakage. The Position LED's will illuminate regardless of the Min/Max setting.

Technical Data

Power Supply	24 VAC± 20%
	50/60Hz
Transformer Sizing	2.0 VA (Class 2 power source)
Torque	10 in-lb [1.1 Nm]
Manual Override	External Push Lever
Running Time	30 seconds, constant independent of load
Humidity	5 to 95% RH Non-Condensing
Ambient Temperature	-22°F to +122°F [-30°C to +50°C]
Storage Temperature	-40°F to +176°F [-40°C to +80°C]
Housing	NEMA 1
Housing Material	UL94-5VA
Noise Level	<30 dB
Quality Standard	ISO 9001



MANUAL GEAR RELEASE



385 Hwy. 33
Englishtown, NJ 07726
Ph: 800-446-3110
Fx: 732-446-5362

P/N 090377A0155 REV. A 04.05.10

Copyright © 2009, EWC Controls Inc., All Rights Reserved

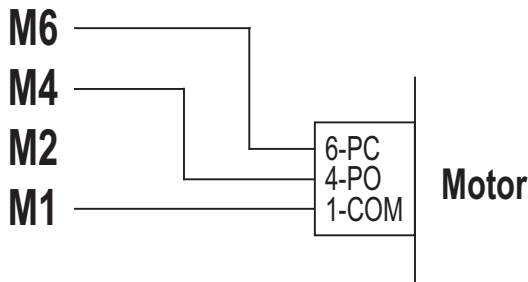
SUBMITTAL FORM

SUBMITTED BY: _____
 JOB: _____
 ARCHITECT: _____
 ENGINEER: _____
 CONTRACTOR: _____
 LOCATION: _____

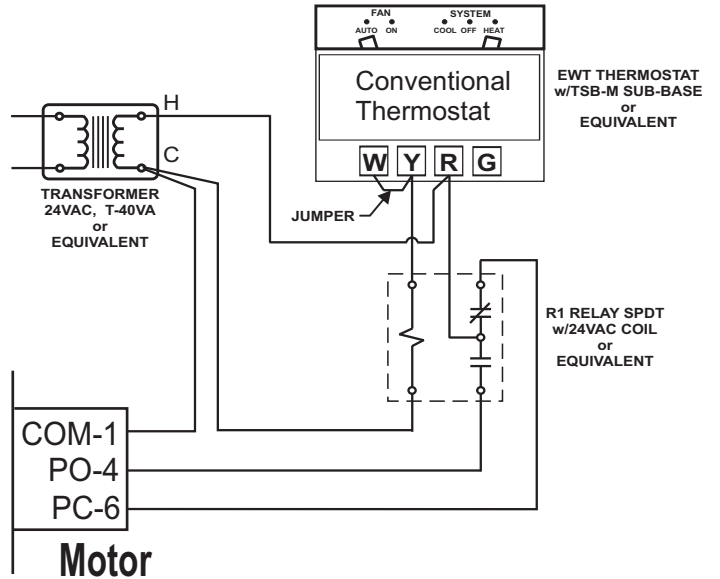
WIRING SOLUTIONS

MOTOR Terminal Output
M6 - Power to Close (PC)
M4 - Power to Open (PO)
M2 - Constant Power (HOT)
M1 - Common (COM)

Wiring to a Control Panel



Wiring a Thermostat to Control a Single Damper



Wiring in Parallel

