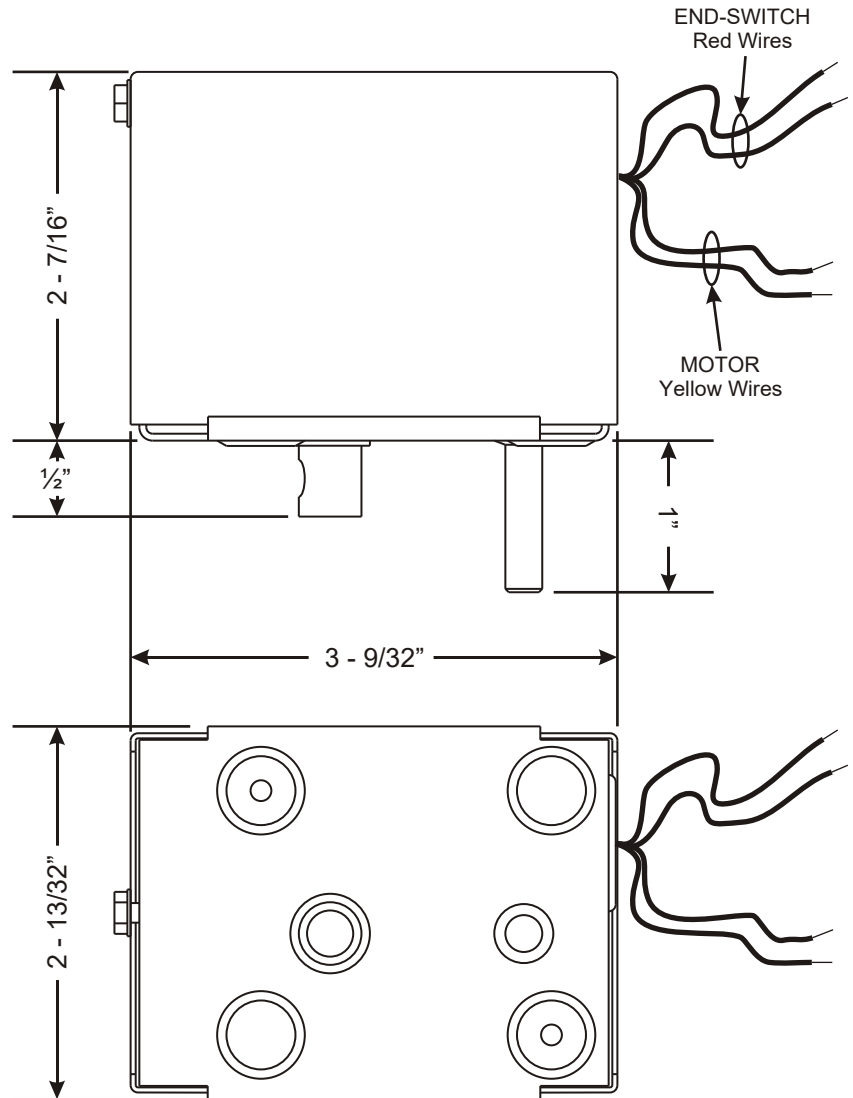


The MA-SRE24 and MA-SRE120 actuators are easy to wire up, and come with a 5 year warranty. The MA-SRE series is for On/Off, fail-safe control of dampers. It also provides true spring return operation for fail-safe operation. The MA-SRE Series provides 85° of rotation. Also included is an end-switch (Red wires) which close contact when the motor has fully rotated when powered. The two Yellow wires power the motor.

Technical Data

Power Supply	
SRE24	24VAC ± 20%, 50/60 Hz
SRE120	120 VAC ±10%, 50/60 Hz
Power Consumption	
SRE24	6.5 Watt
SRE120	6.5 Watt
Transformer Sizing	7 VA (Class 2 power source)
Torque	2.2 In-lbs
End Switch	10 A @ 120 V
Shaft / Axle Size	5/16 In. Diameter
Running Time	
Motor	30-35 sec.
Spring	8 sec.
Humidity	Non-Condensing
Ambient Temperature	0°F to 120°F [-17°C to 49°C]
Storage Temperature	-40°F to 169°F [-40°C to 71°C]
Agency Listings	UL: File # E37601 CSA: File LR19535 CE: Compliant



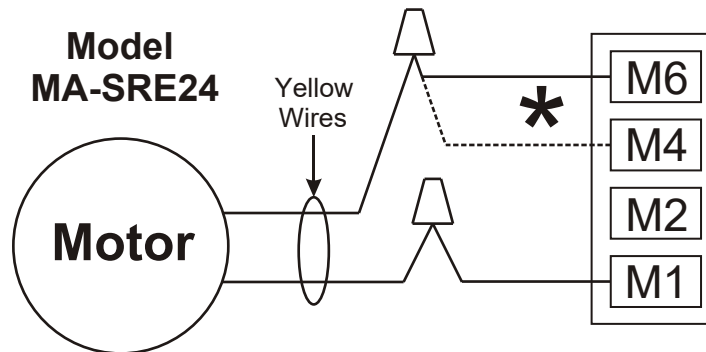
385 Hwy. 33
Englishtown, NJ 07726
Ph: 800-446-3110
Fx: 732-446-5362

SUBMITTAL FORM

SUBMITTED BY: _____
 JOB: _____
 ARCHITECT: _____
 ENGINEER: _____
 CONTRACTOR: _____
 LOCATION: _____

WIRING SOLUTIONS

Wiring to Zone Control



- * WIRE TO M6 IF DAMPER IS POWER CLOSE / SPRING OPEN.
- * WIRE TO M4 IF DAMPER IS POWER OPEN / SPRING CLOSE.

Wiring with Field Supplied Control

