

ULTRA-ZONE®

Forced Air Zone Controls

The RD-HD series of manually adjusted round volume control dampers are designed to control and limit air volume (CFM) on round duct runs.

The RD-HD allows a technician to properly balance the HVAC duct system during a test and balance procedure.

The RD-HD includes a field adjustable high quality Rossi® manual quadrant, with easy to set incremental locking positions.

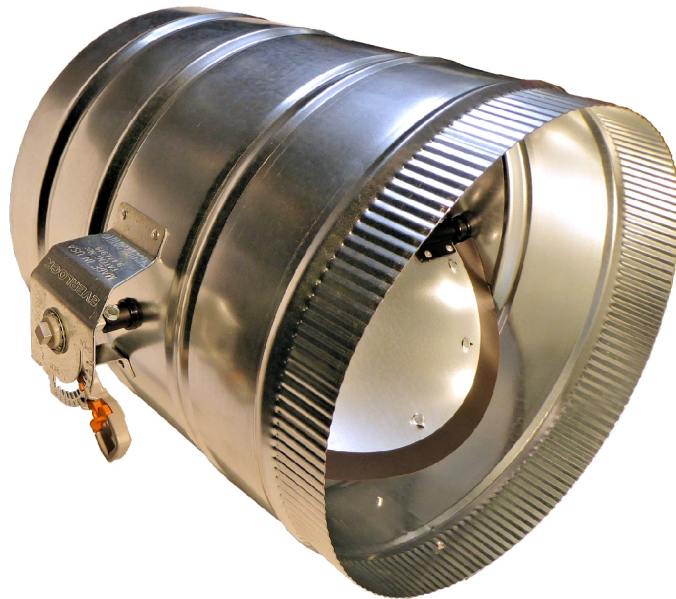
The RD-HD is constructed from 24gauge galvanized steel with stiffening beads at both ends of the shell. The blade is heavy duty 20gauge galvanized steel and is designed to provide reliable and quiet volume control, at nominal to moderately high duct velocities.

RD-HD balancing dampers are easy to install and adjust. The superior design insures long life with zero maintenance and a 5 year warranty.

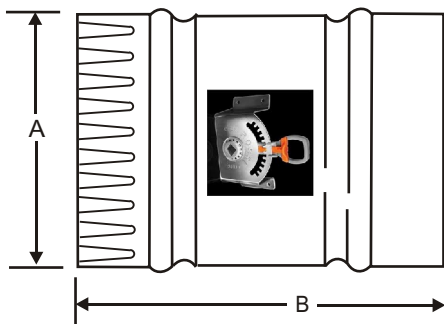
Register your warranty on-line at <https://ewcccontrols.com/warranty/>

SUBMITTAL SHEET

Model RD-HD Round Volume Control Hand Damper



Manual
Quadrant
Range of
Adjustment



NOMINAL DIMENSIONS & PERFORMANCE VALUES

MODEL #	A	B	CFM @ 900 FPM velocity	CFM @ 0.08" Friction Loss per 100ft.	Press. Drop in wc
RD-HD - 6	6.00"	6.00"	175	100	0.01
RD-HD - 7	7.00"	6.00"	240	140	0.01
RD-HD - 8	8.00"	6.00"	320	210	0.01
RD-HD - 9	9.00"	6.00"	400	280	0.01
RD-HD - 10	10.00"	6.00"	480	375	0.01
RD-HD - 12	12.00"	8.00"	700	600	0.01
RD-HD - 14	14.00"	8.00"	950	900	0.01
RD-HD - 16	16.00"	10.00"	1250	1275	0.01
RD-HD - 18	18.00"	10.00"	1600	1750	0.01
RD-HD - 20	20.00"	10.00"	1950	2300	0.01

Pressure Drop values may increase at higher velocities



385 Hwy. 33
Englishtown, NJ 07726
Ph: 800-446-3110
Fx: 732-446-5362

SUBMITTAL FORM

SUBMITTED BY: _____
JOB: _____
ARCHITECT: _____
ENGINEER: _____
CONTRACTOR: _____
LOCATION: _____